



Physiotherapy Services Table of Costs

Effective from 1 July 2007

For use by a registered physiotherapist

Important note – the worker must always be referred by a registered medical practitioner and have a current medical certificate to cover any services provided

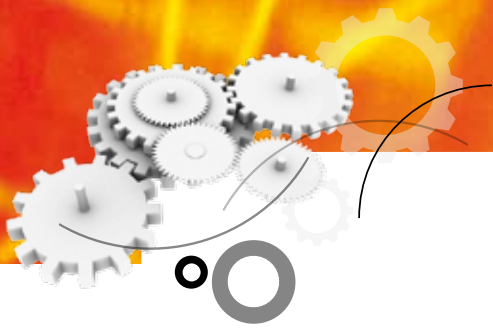
Initial consultation	Descriptor	Insurer prior approval required ¹	Item number ²	Fee GST excluded [#]
Initial consultation	First consultation with worker	No	100021	\$62.00
Initial consultation (multiple area)	Two or more entirely separate injuries/conditions assessed and treated; treatment applied to one condition does not affect the symptoms of the other injury; must relate to the compensable injury; requires medical certificate detailing each area/condition to be treated	No	100313	\$93.09
Subsequent consultation				
Subsequent consultation – Level A	Selective treatment/reassessment program where a standard consultation (level B) is not required; may include brief or partial reassessment	The first seven sessions (including initial consultation) are pre-approved	100108	\$38.59
Subsequent consultation – Level B	Standard treatment consultation—management of one area/condition only		100006	\$52.00
Subsequent consultation – Level C	Two entirely separate injuries/conditions assessed and treated; treatment applied to one condition does not affect the symptoms of the other injury; does not include a condition with referred pain to another area		100101	\$74.90
Subsequent consultation – Level D	More than two entirely separate injuries/conditions assessed and treated; treatment applied to one condition does not affect the symptoms of the others; does not include a condition with referred pain to another area		100102	\$99.91
Reassessment/program review				
Reassessment/program review	Indicated when the worker has been in active rehabilitation for six weeks and further treatment is likely	Yes	100555	\$72.00
Specific physiotherapy assessment/intervention (complex)				
Specific physiotherapy assessment (complex)	Used for assessing complex conditions that cannot be adequately assessed within a standard (100021) or multiple areas (100313) due to the complexity of the condition; if treatment is required, you must submit a <i>Provider Management Plan</i> prior to commencing treatment	Yes	100406	\$137.92 per hour
Specific physiotherapy intervention	One-on-one session of recommended interventions identified during a specific physiotherapy assessment (100406); service/treatment is not classified elsewhere in the <i>Table of Costs</i> ; an hourly rate may be appropriate— maximum one hour	Yes	100407	\$137.92 per hour
Hand/upper limb consultation	One-on-one consultation and treatment services to workers with upper extremity injuries below shoulder level; provide hand therapy services in accordance with the worker's specific injury and needs; apply evidence-based protocols where applicable; consult the guidelines—ensure that treatment offered is considered specialist hand therapy and you are qualified to provide the treatment	First seven sessions are pre-approved if referred by medical hand specialist	100287	\$137.92 per hour

For details of when and how to use a *Provider Management Plan* see the *Guidelines for Allied Health Provider Forms* – both available from Q-COMP's website at www.qcomp.com.au or call Q-COMP on 1300 789 881

¹ Where prior approval is indicated you must seek approval from the insurer before providing services.

² Before billing for services please read the *Physiotherapy Services Table of Costs Guidelines* available from Q-COMP's website at www.qcomp.com.au under Health Professionals.

[#] Rates do not include GST. If GST is required it is up to the provider to include it in the invoice. For clarification regarding GST contact the ATO.



Physiotherapy Services Table of Costs continued

Effective from 1 July 2007

For use by a registered physiotherapist

Important note – the worker must always be referred by a registered medical practitioner and have a current medical certificate to cover any services provided

Therapeutic exercise services	Descriptor	Insurer prior approval required ¹	Item number ²	Fee GST excluded [#]
Initial program development and instruction	Development of gym/pool-based program with individual one-on-one instructions and/or demonstration of the program at an appropriate venue away from rooms; worker's condition requires the continued expertise of a physiotherapist for the successful progression to meet their functional goals in a gym/pool-based program— maximum one hour	Yes	100314	\$137.92 per hour
Program instruction subsequent consultation	Subsequent monitoring of gym/pool-based program and individual one-on-one instruction at an appropriate venue away from rooms; worker's condition requires the continued expertise of a physiotherapist for the successful progression to meet their functional goals in a gym/pool-based program— maximum one hour	Yes	100402	\$137.92 per hour
Group sessions				
Group therapeutic exercise sessions	Group therapy programs—for example aquatic physiotherapy classes, exercise groups education; maximum eight persons per group; conditions apply—consult guidelines The insurer will only pay for the attendance of workers' compensation claimants	Yes	100106	\$35.09 per person per hour
Group education sessions	Education programs—for example pain management, back education; maximum eight persons per group; conditions apply—consult guidelines The insurer will only pay for the attendance of workers' compensation claimants	Yes	100171	\$35.09 per person per hour
Other				
Independent case review	Independent examination and report of a worker—not by the treating therapist; includes assessment and report	To be provided only following a request from the insurer	100226	\$172.34 per hour

For details of when and how to use a *Provider Management Plan* see the *Guidelines for Allied Health Provider Forms* – both available from Q-COMP's website at www.qcomp.com.au or call Q-COMP on 1300 789 881

¹Where prior approval is indicated you must seek approval from the insurer before providing services.

² Before billing for services please read the *Physiotherapy Services Table of Costs Guidelines* available from Q-COMP's website at www.qcomp.com.au under Health Professionals.

[#] Rates do not include GST. If GST is required it is up to the provider to include it in the invoice. For clarification regarding GST contact the ATO.